

Phlox

Security & Safety Equip. llc

Proficient in Fire Protection Solution



SL.NO.	CONTENTS	PAGE
01	INTRODUCTION	02
02	DIRECTOR'S MESSAGE	03
03	ABOUT US	04
04	CERTIFICATIONS	05-06
05	OUR SERVICES	07
06	QUALITY POLICY	08
07	SAFETY POLICY	09
08	MANUFACTURING PRODUCTS	10-22
09	TRADING PRODUCTS (GST Brand, SDS Brand, NX Brand and others)	23 - 37
10	SUPPLY & INSTALLATION PROJECTS	38- 51
11	CONTACT US	52

We, PHLOX SECURITY & SAFETY EQUIP. LLC are glad to introduce ourselves as a supplier and we do installation of Fire Fighting and Fire Alarm materials and we are primarily located in Sharjah. Our company was established in the Year 2008, since the date of its inception we have made good relation with reputed suppliers, Contractors and Consultants across all Emirates. We have built a trust and good reputation with our clients by providing them prompt services and best quality materials in order to protect consumer's rights, life and property. Our professional team provides best services with accountability and responsibility. Phlox is one of the exclusive suppliers of fire fighting equipment like hose reel, breeching inlet valves, hose reel cabinets, foam chambers, various types of valves and fire extinguishers etc... We also offer a full range of sprinklers for fire fighting, fire alarm devices like fire alarm panels, heat detectors, smoke detectors, manual break glass, fire alarm bell, sounder with strobe etc... are available in both Addressable and Conventional Systems. All the products that we distribute comes with multiple approval like UL, FM, LPCB, BSI and NFPA.

We carry sufficient stock for immediate consumption and we could meet any planned procurement with prompt delivery in Sharjah, Dubai and other Emirates. We can assure you the best price with Quality and Standards.



A key to any success depends on sincere efforts, continuous endeavours, vision and mission. Our vision is to provide the flawless services in the field of fire alarm systems & fire fighting equipments, whether it is testing & commissioning, installation or supplying of materials. We have got a leading, innovating & experienced team of engineers and technocrats who keep an eye to maintain standard quality materials & safety policy as well.

Our mission is to extend our business and to build a long term relationship with our existing customers and our future clients as well. Apart from this, customers' satisfaction is most important factor, keeping in view we provide exceptional customer services by adopting innovative ideas and latest technology.

The corporate world is in a state of transformation, as tasks become more specialized and complex, solutions emerging through relationship building and the global community strives for harmony and balance. Business intelligence solutions are linear processes that can be automated or outsourced. We must become proficient in all aspects and utilize the tools for ensuring continuing innovation.

We, Phlox Security & Safety Equip. LLC, endeavour to attain the proficiency in our work and to get customers' satisfaction, it is the core value of our business.



Eng. Aiham Dali

Phlox Security & Safety Equip. LLC was established in the year 2008 and it is located in Sharjah. Since the date of its inception we have made a good relation with reputed suppliers, contractors and consultants across all Emirates. We have built a trust and good reputation with our clients by providing them prompt services and best quality materials in order to protect consumers' rights, life and property. Our professional team keeps an eye and monitors the work progress with accountability and responsibility. Our Mission is to build a long term relationship with our customers and clients and to provide exceptional customer services by pursuing business through innovation and advanced technology

Our Core Values and Beliefs are to treat our customers with respect and faith. We grow through creativity, invention and innovation. We integrate honesty, integrity and business ethics into all aspects of our business functioning. Phlox's goal is to expand and develop the business with a strong base of key customers. We do project work and undertake all maintenance work related to firefighting system and fire alarm systems. With long years of existence and experience we take proper care of our customers and pay heed towards their suggestions and complaints. Phlox takes special care for ensuring the safety of all occupants in building, structures and private or public establishments to avoid any loss of lives and property.

Our Professional Team comprises of competent, qualified and experienced engineers, supervisors, technicians, foreman and office staff to play a significant role in planning, installation, programming and maintenance of fire protection systems based on customers' demand and needs. Moreover, we are committed towards hard and smart work which is performed by our crew. We take all necessary steps which are helpful in fire protection solution.

Our Motto is to get customers' satisfaction, their comments and suggestions are important to us and we take necessary steps for reformation. We are using quality products which meets the civil defense standards. We use GST products for all Fire alarm systems and American Marsh brand for our fire pumps. Last but not the least we are able to provide you the best services for your fire protection solution and needs.



شهادة استيفاء منشأة



رقم الشهادة	صلاحية الشهادة	حررت بتاريخ	رقم ملف المنشأة	رقم الطلب	رقم إيصال الدفع
C EST-1-2025-72902198	من 21/03/2025 الي 20/03/2026	27/03/2025	EF-2023-20015521	EST-25-009497	400000283598
المنشأة القبس لمعدات الأمن والسلامة ذ.م.م 572333 . الدائرة الاقتصادية - الشارقة					
العنوان الرئيسي مدينة الشارقة - الصناعية 13 - سالم حميد سيف محمد الكعبي - شبرا # 4					
رقم الأرض أ/24/689 ملك					
أنشطة المنشأة - صيانة معدات إطفاء ومكافحة الحريق - تركيب أجهزة ومعدات الإطفاء ومكافحة الحريق - بيع قطع غيار معدات وأجهزة السلامة وإطفاء الحريق - بالتجزئة					
أطراف الرخصة ايهم دالي مرشد محمد عبدالله السري تركيا الإمارات العربية المتحدة					
الشروط و الاحكام - أي تعديلات في أنظمة وأجهزة ومعدات السلامة والوقاية من الحريق أو النشاط يتطلب موافقة من الدفاع المدني - توفير شهادة استيفاء المنشأة سنوياً بعد انتهاء صلاحية الشهادة - توضع الشهادة في مكان بارز وواضح - يتم تطبيق لائحة المخالفات الصادرة بقرار المجلس التنفيذي رقم 10 لسنة 2020 في حال عدم الالتزام باشتراطات الدفاع المدني					
لا يوجد أنشطة مواد خطرة					
الشهادة صادرة إلكترونياً ولا تحتاج إلى توقيع أو ختم رسمي أي كشط أو تعديل في هذه الشهادة يلغيتها					



للتوارئ
997
Emergency

حكومة الشارقة
هيئة الشارقة للدفاع المدني
Government of Sharjah
Sharjah Civil Defense Authority



ترخيص تركيب وصيانة Installation and Maintenance License

عدد التراخيص: 1

License No.	TM-2020-17655460	رقم الترخيص	Trade License No.	572333	رقم الرخصة
Expiry Date	تاريخ الانتهاء 27/06/2025	Issue Date	تاريخ الإصدار 31/12/2024		
Trade Name	القيس لمعدات الأمن والسلامة ذ.م.م PHLOX SECURITY & SAFETY EQUIP. LLC				اسم المنشأة
Owners	ايهم محمد صلاح الدين دالي (الجمهورية العربية السورية) ، مرشد محمد عبدالله السري (الإمارات العربية المتحدة)				أطراف الرخصة
Address	مدينة الشارقة - الصناعية 13 - سالم حميد سيف محمد الكعبي - شبرا # 4				عنوان المنشأة
File Number	EF-2023-20015521				رقم ملف المنشأة
First License Date	18/03/2020	تاريخ أول ترخيص	Phone No.	0501685154	رقم الهاتف
Technicians Count	24	عدد الفنيين	Engineers Count	6	عدد المهندسين

License Category	فئة الترخيص
• Detection, Fire Alarm, and Fire Fighting Systems (A)	• تركيب وصيانة أنظمة الكشف والإنذار ومكافحة الحريق (A)

رقم المعاملة: 31122024130723785

رقم الطلب: TLM-24-015205



- تعتبر المنشأة مرخصة من قبل هيئة الشارقة للدفاع المدني للعمل في إمارة الشارقة فقط وفقاً لقرار المجلس التنفيذي رقم (10) لسنة 2020
- يجب إخطار هيئة الشارقة للدفاع المدني في حالة حدوث أي تغيير أو تعديل في البيانات المتعلقة بالترخيص الصادر عن الهيئة
- يتم تطبيق لائحة المخالفات بموجب قرار المجلس التنفيذي رقم (10) لسنة 2020 في حال عدم الالتزام باشتراطات الدفاع المدني

“سلامة المجتمع مسؤولية الجميع”

نسخة رقم 7 - 01:14 31/12/2024 م - AIHAM M SALAHALDINDALI DALI 2 - 1



للتوارئ
997
Emergency

حكومة الشارقة
هيئة الشارقة للدفاع المدني
Government of Sharjah
Sharjah Civil Defense Authority



Trade License No.	572333	رقم الرخصة
Trade Name	القيس لمعدات الأمن والسلامة ذ.م.م PHLOX SECURITY & SAFETY EQUIP. LLC	اسم المنشأة
License No.	TM-2020-17655460	رقم الترخيص

1. DETECTION AND FIRE ALARM SYSTEM	1. نظام الكشف والإنذار من الحريق
1.1. DETECTION AND FIRE ALARM SYSTEM	1.1. نظام الكشف والإنذار من الحريق
1.2. VOICE EVACUATION SYSTEM	2.1. نظام الإخلاء الصوتي
1.3. EMERGENCY LIGHTING SYSTEM	3.1. نظام إنارة الطوارئ
1.4. EMERGENCY PANEL EXTENSION SYSTEMS	4.1. أنظمة لوحات الطوارئ الإرشادية
2. FIRE FIGHTING SYSTEMS	2. أنظمة مكافحة الحريق
2.1. PORTABLE FIRE EXTINGUISHER	1.2. طفايات الحريق المحمولة
2.2. AUTOMATIC SPRINKLER/HOSE/HYDRANT /WATER BASED SYSTEM	2.2. المرشات التلقائية/الذراطين/نقطة تزويد المياه/الأنظمة المائية
2.3. FIRE PUMP SYSTEM	3.2. نظام مضخات الحريق
2.4. AUTOMATIC FIRE EXTINGUISHING SYSTEMS	4.2. أنظمة الاطفاء التلقائي



- تعتبر المنشأة مرخصة من قبل هيئة الشارقة للدفاع المدني للعمل في إمارة الشارقة فقط وفقاً لقرار المجلس التنفيذي رقم (10) لسنة 2020
- يجب إخطار هيئة الشارقة للدفاع المدني في حالة حدوث أي تغيير أو تعديل في البيانات المتعلقة بالترخيص الصادر عن الهيئة
- يتم تطبيق لائحة المخالفات بموجب قرار المجلس التنفيذي رقم (10) لسنة 2020 في حال عدم الالتزام باشتراطات الدفاع المدني

“سلامة المجتمع مسؤولية الجميع”

نسخة رقم 7 - 01:14 31/12/2024 م - AIHAM M SALAHALDINDALI DALI 2 - 2

Since the inception of **Phlox Security & Safety Equip. LLC** in 2008, our core business has been fire alarm & fire fighting, and we have now more than a decade of experience as a fire service provider to construction, contracting companies, commercial complex and industries as well.

Phlox has been the leading provider of fire alarm and firefighting services for high rise buildings, mall and industry. Today Phlox Fire Services operating efficiently and has developed many of the best practices. We are your trusted partner in fire services and we can assure you that you will be hassle free of fire related problem.

Phlox provides high-quality services based specifically to customer requirements. We provide cost-effective integrated fire protection system, enabling customers to focus on their strategic goals and core competencies.

Our Installation Department comprises of proficient technocrats and engineers and they are competent enough to discuss, prepare and meet your needs during construction period and in line with project guidelines. Our specialized Project Managers are capable to complete large and complex projects.

The growing responsibilities based on safety and the fact that collective and personal safety is an inherent principle of basic human necessities, in the concept of individual wellbeing, it makes stronger and important. According to this perspective, the context of its social and necessary functions enabling to create favorable conditions & consolidation of safety habits within the community. We need to emphasize and turn into a valuable informative instrument and promote a better culture on the responsibility of safety & security.

Our Primary Mission is to protect the lives and properties of the people. It can be achieved by fire suppression operations and fire prevention through inspections and prompt action to rectify and fixing. Additionally, through the special operations division, they are providing emergency response services for normal and high rise buildings, hospitals, educational institutions, malls and other public places.

As such we can conclude the importance of swift action and response in case of emergency for dousing the fire and to save people and their properties without any loss and anxiety

Phlox management undertakes the appropriate steps to implement the principles to maintain the standard quality materials related to fire alarm system and firefighting equipment and it is used as a reference for the Company's Quality Management System.

The activity is carried out in compliance with both the technical standards and the current legal framework, with customer satisfaction as the main objective.

As a result, in compliance with that policy, the Management pursues the following main objectives:

- Increase the professional level of its employees through appropriate individual training to respond to the continuous technical evolution.
- Increase the number of orders in terms of increased sales and revenues, to gain greater visibility and credit in the sector in which the Company operates.
- Continue to provide reliable products and use materials in compliance with applicable laws.

The Company's Management takes an active role towards the achievement of the goals set herein.

Our aims are to:

- Help customers in maintaining their fire fighting and protection capability to the highest standards.
- Maintain a local and responsive service.
- Provide a full range of products and services
- Remain competitive and offer value for money in terms of service
- Maintain existing customers and attract potential new customers
- Maintain an effective management system complying with statutory, technical, national and international Standards.
- Encourage a culture of flexibility, service, quality and continual improvement.

This is achieved through the:

- Full commitment of the top management and workforce to this quality policy and the needs of the customer.
- Understanding that achieving customer satisfaction by listening and providing a consistently high quality product and service is key to the success of the business.
- Skill, training, dedication and relevant working experience of staff.

Every business is required to have a formal Fire Safety Policy, from small nurseries & offices to large hotels & commercial units. It is an important part of our fire safety management system for compliance under the civil defense rules. There should be a good demonstration of the company's fire safety procedures and what actions people should take in the event of fire. This will ensure the safety of employees, and any visitor to the company's premises, from the dangers of fire. We must take care of fire safety policy ensuring that it will be effective and safe by all aspects.

Phlox Security & Safety Equip. LLC can help businesses with any other fire safety procedure they may require, as we have a team of experienced fire safety professionals who will be able to handle all kinds of situation and to protect people from anxiety and danger.

It is to be ensured that reasonable precautions are taken to provide a safe working environment and that steps are taken to prevent or minimize the causes of fire. **The following points are to be checked properly:**

- Ensure suitable and sufficient fire risk assessments are carried out
- Implement protective and preventative measures as required to ensure the safety of all 'relevant persons'.
- Appoint competent persons in implementing the measures ensuring that all aspects of our premises or plant or equipment provided to secure fire safety are maintained by a competent person in an efficient and fit state, in efficient working order and in good repair in accordance with fire risk assessments as required.
- A fire safety policy and procedures designed to protect both life and physical assets. The effectiveness of this policy depends not only on physical precautions designed to prevent the occurrence and spread of fire, but also on the cooperation of every member of staff, visitors and relevant incumbents. Compliance with the fire safety policy and procedures is a legal requirement. All staff will have duties and responsibilities in respect of fire safety.

As such our priority and endeavor are to be focused on fire safety policy to protect the people before any mishappenings, damages or loss of lives.

FOAM BLADDER TANK

Product Description:

Foam bladder tank is widely used in foam fire extinguishing system, such as chemical industrial enterprises, port and dock, large oil storage, airport oil storage, oil or fuel power plants, boiler room, dangerous goods storage, chemical warehouses and so on.

Foam bladder tank is made from tank, bladder, pressure-type proportioner, safety valves, control valves, level gauge and a lot of ancillary components.

The foam concentrate in the bladder can be used next time because it doesn't contact with water.

Type of Proportioner: 1%, 3%, 6%.

Shape of tank: Horizontal or vertical.

Volume of tank: 500-15000L.



FM-200, 3M NOVEC 1230 AND INERGEN CLEAN AGENT FIRE SUPPRESSION SYSTEM

There are three common clean agent fire suppression systems to choose from, including FM-200, 3M™ Novec™ 1230, and Inergen Clean Agent Fire Suppression System. All systems use gases that are safe for the environment and humans, but they utilize different ways of suppressing a fire.

- The FM-200 system is stored as a liquid and vaporizes when discharged. The system displaces the oxygen around a fire, but heat absorption is its primary extinguishing capability.
- The Inergen system uses inert gases- nitrogen, argon, and carbon dioxide- to reduce the oxygen level and suppress the fire. While carbon dioxide is included, the concentration is safe for humans and the environment. Once the Inergen concentration is discharged, it returns to the atmosphere in its natural state.
- The 3M™ Novec™ 1230 system uses a liquid that is vaporized when discharged, similar to the FM-200 system. However, unlike the FM-200 which suppresses the fire by heat absorption or cooling, the 3M™ Novec™ 1230 displaces the oxygen around a fire to suppress it.



CO2 FIRE SUPPRESSION SYSTEMS

If a building has rare or little occupancy, they may use a CO2 fire suppression system instead of a clean agent system. These systems are only used in buildings with very low occupancy, as carbon dioxide can result in health risks for anyone exposed, and can even be deadly. Clean agent systems are much more common, as they use gases they aren't harmful to humans.

3 Main Parts Of The System

A clean agent fire suppression system is commonly made up of three parts: smoke detectors, the control panel, and notification devices. The smoke detectors work as usual and will detect a fire before it has time to escalate into an uncontrollable event. The smoke detector will send a signal to the control panel, which then alerts the notification devices and activates the release device to suppress the fire.

The notification devices are there to warn occupants of the fire, and alert people in the area when the clean agent is about to be released.



DRY POWDER TROLLEY

Description:

Wheeled Powder Fire Extinguisher 50KG is manufactured according to Directive 96/98/EC (MED) with modules B and D. As with portable extinguishers, wheeled units also have to comply with high standards to ensure their extinguishing capability (fire rating), quality and reliability. We at a.b.c. know how important it is to make the right choice in firefighting. Recently, a new European standard for wheeled extinguishers, EN 1866, was introduced. The a.b.c. wheeled extinguisher range has been the first in Europe to comply with this standard. The wheeled units also carry the CE mark so the range can boast three quality guarantees: a.b.c. (ISO 9001), compliance with EN 1866 and the CE mark. The standard EN1866 defines important minimum levels of pressure retention, corrosion protection, operating temperatures and fire rating.

Features:

- Extremely high ratings on A, B and C class fires (solid combustibles, liquid fuels and gases)
- First in Europe in accordance with the new EN 1866 standards
- Excellent quality, therefore a long operational lifetime
- Other dry powder types available (BC, Monnex)
- Can be used at low temperatures (-30°C)
- Very mobile and easy to operate
- Good ergonomic, easy to drive
- With CE approval
- Easy to service

Specifications:

- Product: Wheeled Powdered Extinguisher
- Brand: a.b.c. S.r.l. (Milan) Italy
- Model: 14164
- Nominal charge: 50 Kg
- Discharge time: 43 sec
- Jet length: 11 m
- Extinguishing agent: Powder MAP ABC 30
- Propellant: nitrogen or dry air
- Dimensions (HxWxD) mm: 1050x450x550 mm
- Weight: 80 kg



CO2 FIRE EXTINGUISHERS TROLLEY

Description:

20kg co2 fire extinguishers are generally used for industrial fires and are ideal for B, C & E Fires. It is an alternative clean agent for 1211 halon application, purity of our co2 gas reaches 99.98%. Co2 is electrically non-conductive and therefore safe for fighting fires in electrically powered equipment. Co2 extinguishers are made of seamless carbon steel materials to withstand high storage pressure. Co2 is colorless gas which reduces the oxygen of the air around the fire, the co2 gas does not deteriorate with storage or freeze in a container. Snow horn with a built-in nozzle specially designed to fit our valve to give the most efficient fire suppression. Manufactured according to BSEN3, Available in black and red color and Approved by UAE civil defense

Features:

- Co2 fire extinguishers are generally used for industrial fires.
- The ideal agent for class B, C & E fires.
- It is an alternative clean agent for 1211 halon application.
- Co2 is electrically non-conductive and therefore safe for fighting fires in electrically powered equipment.
- Co2 gas does not deteriorate with storage or freeze in the container.
- The purity of our co2 gas reaches 99.98%
- The valve is made from brass provided with safety release valve.
- Co2 extinguishers are made of seamless carbon steel materials to withstand high storage pressure.
- Snow horn with a built-in nozzle specially designed to fit our valve to give the most efficient fire suppression.
- Product: 20KG CO2 Trolley Fire Extinguisher

Specifications:

- Brand: phlox
- Capacity: 20kg
- Operating Pressure: 70 bar
- Test Pressure: 250 bar
- Discharge Time: 35sec
- Discharge Range: 3Mtrs
- Temperature Range: -20c+60c
- Valve: Brass hot stamping
- Hose Length: 5Mtrs
- Paint Finish: Electrostatic polyester powder coating
- Class of fire: B, C & E



FIRE FIGHTING HYDRANT MONITOR

Water hydrant mounted on the pipe.

Industrial safety equipment for extinguishing fire.

Worker standing with monitor on background.

Water supply industry or refinery plant extinguishing accessories.

Fire protection equipment for oil and gas refinery factory.

Water supply chain mounted on tube, mounted on monitor monitor, fixing water pipes and accessories.



KITCHEN HOOD SUPPRESSION SYSTEM

Kitchen suppression is an automatic wet chemical extinguishing system designed to protect equipment, life and property. Industrial kitchens are a major source of fires and these suppression systems counteract that.

Kitchen suppression systems are designed, tested, and approved to provide fire protection for commercial kitchen cooking appliances, hoods, and ducts. The suppression systems consist of an agent storage tank, manual release station, an automatic releasing mechanism, and supply piping that directs the agent to nozzles strategically positioned at heat sources in the kitchen.

Kitchen Hood Suppression System Work?

A fire needs three things to thrive: oxygen, heat, and fuel. Once the system detects a fire, the nozzles above the appliance will discharge wet chemicals. These wet chemicals are engineered to quickly put out fires by covering the flames and starving them of oxygen. As soon as the system trips, the gas line to the appliance will also be immediately cut off, depriving the fire of fuel.

This two-pronged approach quickly puts out a kitchen fire without affecting other cooking stations. This means that you don't lose all of the food being prepared in your kitchen, just the food that was burned in the fire. Since fires produce a lot of smoke, the hood automatically turns on to remove the smoke from your kitchen. Kitchen hood suppression systems respond automatically to fires, which minimizes loss.

If you're looking for a code-compliant and cost-effective Kitchen Suppression solution for your application, we'd like to help. We will tailor a solution that fits your needs, no matter your size, complexity or line of business. From new installation to retrofit, freestanding or integrated, we will configure your system specifically for its environment — with thought given to ease of expansion or future upgrade.



FOAM CABINET

Description:

Foam Cabinet is highly effective product for Gas Stations, Petrochemical Factories, Industrial Facilities, Warehouses and generally for all areas that protection is required due to fire Classes A and B.

High Rates on A and B Fire Classes.

Ergonomic design for easy use by one Operator.

The top of the Cabinet is designed for outdoor mounting.

Environmentally Friendly Foam.

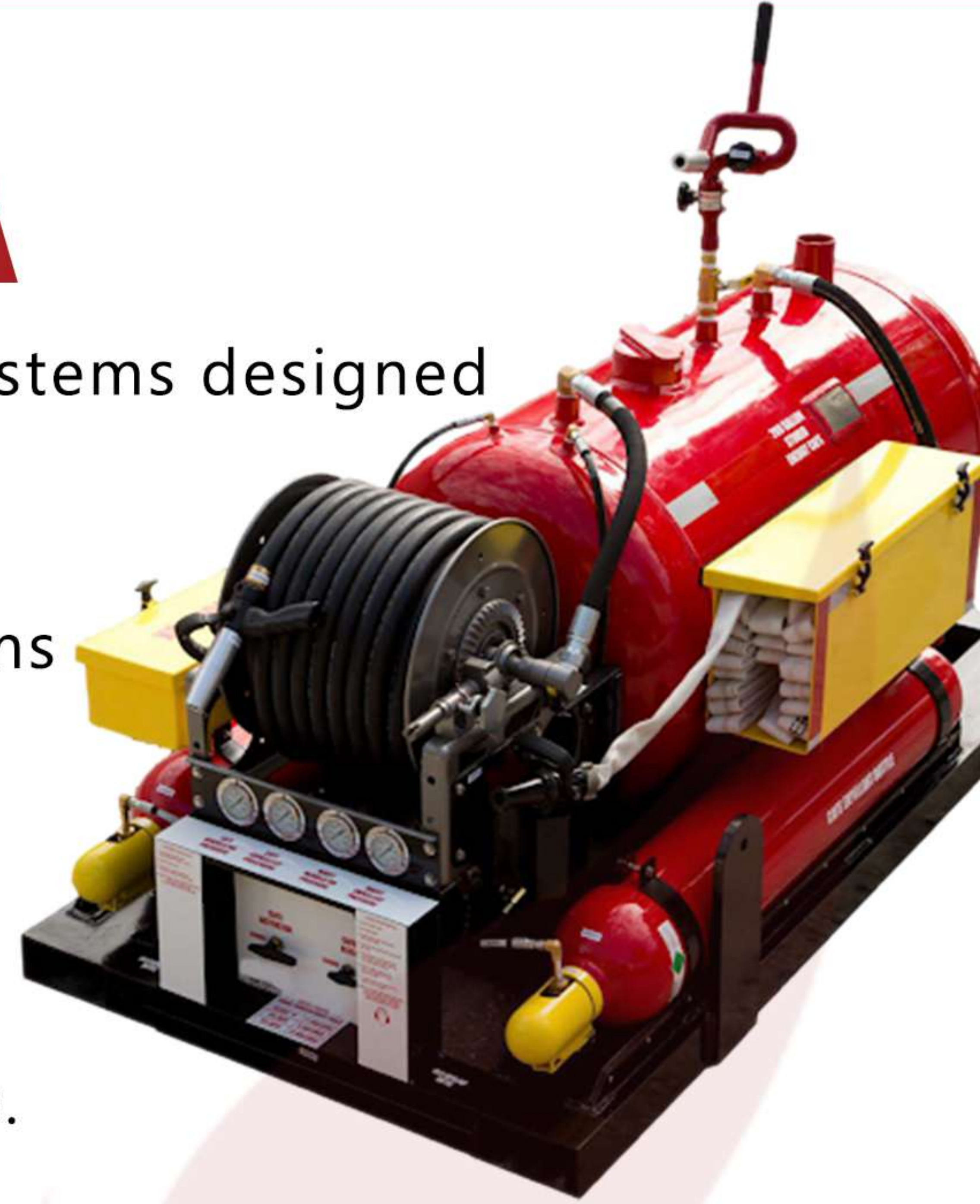
Specifications & Contents:

- Construction material: Galvanized Steel 1.2mm Electrostatic Paint RAL3000
- Hose Reel with arm Bracket
- Stainless Steel Pipe 2" for Water Supply
- Brass Angle Valve 2"
- Foam Mixer with Flow rate 400lt / min with Aluminum Storz Couplings 2"
- Foam Suction Hose with Filter made of a rigid material.
- Foam nozzle 2" with Aluminum Storz Couplings 2".
- High Quality Hose 2", 30m, WP: 8Bar bounded with Aluminum Storz couplings 2"
- Two Foam Canisters 25lt



FOAM FIRE FIGHTING SYSTEM SKID

Fire offers a wide range of Skid-Mounted Fixed Foam Systems designed for use across multiple applications around the world. From small 300 Liter capacity Heli mixers designed for Heli-deck protection to high capacity 4000+ Liter Systems designed to protect large scale marine & industrial risks, a choice of 'Packaged' and 'Bespoke' solutions. With optional framed versions and sun-roof models for warmer climates we can manufacture in customer-specific materials and offer a range of finishes.



WATER FIREFIGHTING SYSTEMS SKID

Put on the back of a Ute or trailer and transport the Mobile Fire Fighting Skid where it is needed. To extinguish fires on your property or even water plants in during non-fire season.

It's a 1000-liter IBC tank which is UV stabilized so it will last a fair few years out in sunlight. It has a fire hose reel with 30-meter hose on it with nozzle and fittings, and it's 19 mil hose. The fire pump is a Davey 5155 firefighter, which has a Honda GX 160 5.5 horsepower engine. The base is approximately 2m long by about 1.1m wide and has been manufactured to hold the IBC tank, hose reel and the fire pump for easy lifting onto the back of a Ute or a trailer.

Firefighting Skid Specifications

Tank Capacity: 1,000 Liters

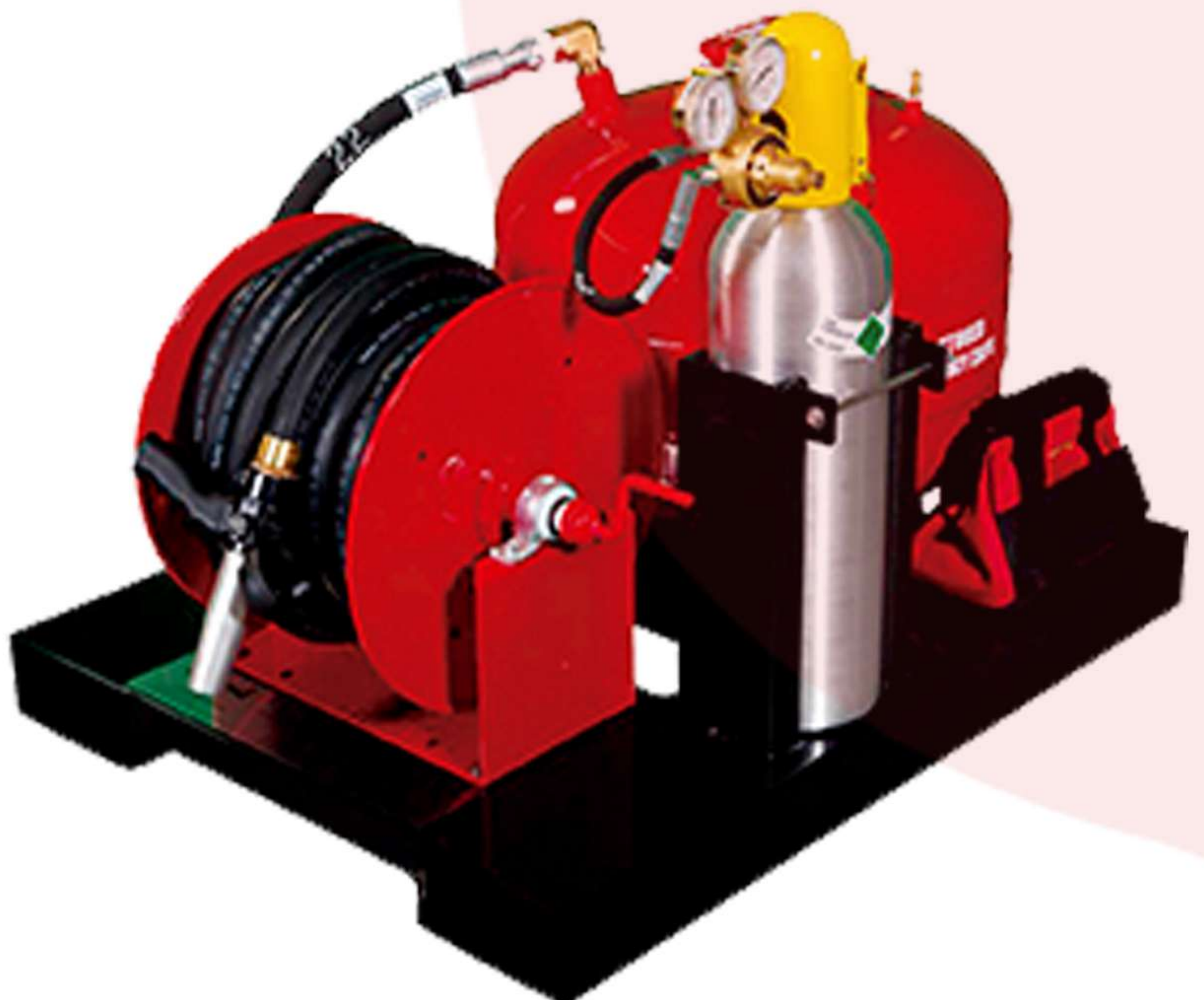
Tank Type: UV Stabilized IBC

Pump Model: j-line

Pump Engine: Honda GTX160 5.5 HP

Hose: 30m fire hose & reel

Skid Size: Approx 2m x 1.1m



FOAM TRAILER

Description:

Foam Trailer is a complete mobile package meeting all applicable NFPA standards consisting of a trailer constructed with frame, wheels, and axles capable of carrying the total charged weight of the trailer assembly and the foam concentrate.

Foam Trailer frame includes a tongue jack, electrical connections, NFPA 1901 lighting package (optional), reflective striping, rear mud flaps, and rear stabilizer jacks. The foam system can utilize either of two foam storage vessel designs: polyethylene tote(s), either single, dual, multiple or a rigidly constructed metal foam tank.

The foam monitor is capable of delivering up to 1000 gpm (3785 lpm) of foam solution at a pressure of 100 psi (7.0 bar). The monitor connections are up to 3.0" (76 mm). The self-educating monitor nozzle is capable of delivering up to 1000 gpm (3785 lpm) at 100 psi (7.0 bar).

Features:

- Trailer design offers extreme mobility
- Single, dual or multiple polypropylene tote design available
- Metal concentrate tank or custom design trailers also available
- Totes containers are manufactured of high-density polyethylene and are incased in a rigid galvanized steel grid
- Available in 265 gallon (1003 litre) and 320 gallon (1211 litres) capacities
- Standard size metal tanks available in sizes of 500, 750, and 1000 gallons (1893, 2839, 3785 litres). Note: Custom designed sizes available to meet customer needs
- Trailer constructed of all welded steel
- High flow capacity
- Self-educating nozzle
- Accessory options available including NFPA 1901 compliance
- Meet DOT highway requirements



FOAM MASTER

Description:

Foam Master ideal for rapid deployment to flammable liquid fires & chemical spills. Foam tank made of stainless steel, externally powder painted (yellow color), and can be operated by one person.

Features:

- Ideal for rapid deployment to flammable liquid fires & chemical spills.
- Externally powder painted (yellow color)
- Foam tank made of stainless steel.
- Can be operated by one person.

Specifications:

- Product: Foam Master
- Capacity: 150, 200 and 300 liters



FOAM HOSE REEL STATION

Description:

foam hose reel station is a self-contained unit that relies only on water flow and pressure to place the system into operation. It is designed to be installed in a fixed location such as processing, storage or handling areas where it is used to control fires or spills of flammable or combustible liquids. The unit is constructed in such a manner that one person may operate it to its full potential with the speed and effectiveness in an emergency situation where foam is required.

Features & Specifications:

Nozzle is a non-air-aspirating type, which has a better flowrate and gives a constant flow on straight jet or fog patterns

Foam concentrate storage tank is manufactured using GRP or SS316 stainless steel

Tank is supplied with 1/2" drain plug and 4" fill opening on top of tank

In line educator pickup tube has manual ball valve that can be closed so that the unit can be used with water only

In line educator has variable suction selector of 1%-3%-6%

Brass manifold with full port ball valves

Suitable for use with any type of foam concentrate



CAFS TRAILER SYSTEM

Description:

Burner Fire Control has been again selected to provide its 200 Gallon Compressed Air Foam Trailer Unit for emergency response for operations in the Arabic Gulf countries, Ghana, Africa.

The CAFS 200 HD Trailer System provides self-contained and mobile capabilities to address potential surface hazards within the operations and surrounding areas.

The Unit was shipped with Class A and B foam concentrate for mitigation of potential structural and hydrocarbon hazards.



FIRE EXTINGUISHERS AND SYSTEM FILLING MACHINE

CO2 EXTINGUISHER REFILLING MACHINE

Description:

Carbon dioxide(Co2) extinguisher refilling machine is newly developed based on. It is suitable for all kinds of portable Co2 fire extinguishers. It is no need to heating and refrigerating, but can refill the Co2 fire extinguisher directly from big bottle.

Carbon Dioxide(Co2) Refilling Machine

Power: 1.1 KW – 220 V/ 50 Hz

Refilling Speed: ≥ 3 KG/Min

Refilling Range: 1~48 KG

Weight: 53 KG

Machine Size: 530×430×430 mm



FIRE EXTINGUISHERS AND SYSTEM FILLING MACHINE

CLAMPING DEVICE

Description:

Pneumatic clamping device for CO₂- and powder extinguishers with pneumatic clamping cylinder.

TECHNICAL DATA model PT (No. 100 450)

Dimensions (l x w x h)	approx. 300 x 850 x 1000 mm
Clamping surface (Ø)	80 - 220 mm
Compressed-air	6 - 8 bar
Color	blue

Optional available at extra charge:

- Equipped with adjustable clamping pressure (used for powder extinguisher)



FIRE EXTINGUISHER FILLING MACHINE

Description:

Dry Powder Fire Extinguisher Filling Machine is a new model improved by our factory. It can suck dry powder into the cylinder quickly by vacuum. It has several advanced features, such as small volume, easy movement, simple operation, and environmental protection. It is especially suitable for the filling, production, and maintenance of dry powder extinguisher and also suitable for filling various powder products. It is ideal equipment in the powder filling industry.

Features:

- It is especially suitable for the filling, production, and maintenance of dry powder extinguisher and also suitable for filling various powder products
- It has several advanced features, such as small volume, easy movement, simple operation, and environmental protection
- Dry Powder Fire Extinguisher Filling Machine is a new model improved by our factory
- It can suck dry powder into the cylinder quickly by vacuum
- It is ideal equipment in the powder filling industry

Specifications:

- Product: Dry Powder Fire Extinguisher Filling Machine
- Filling precision: $1\text{Kg} \leq 0.02$
- Filling Rate: 8kg/min
- Power: 1.1KW
- Voltage: 220V, single phase
- Weight: 80Kg



GST 





ADDRESSABLE CONTROL PANEL

Description:

One loop & two loop addressable fire detection panel packed with features not usually associated with smaller systems, providing a high quality solution at exceptionally good value.

Loop Capacity 235/477 intelligent

30/60 logical configurable zones and optional Fireman's

Control Panel Graphical LCD display

Programmable from PC

30 Zone Indication and manual intervention panel

Positive Alarm Sequence and Acknowledge Function

Dirty Detector, Reporting and Test Function

Built in RS485 mimic and repeater output (Maximum 10 repeaters)



ADDRESSABLE HEAT DETECTOR

Description:

This detector is extremely reliable for use in places that may have high dust levels or a smoky environment, making a normal smoke detector unsuitable.

Fixed temperature and rate of rise heat detection

It is aesthetically pleasing with a low profile, unobtrusive design that will complement modern building designs.

Electronically addressed

Twin LED for 360° vision

With Remote indicator output



ADDRESSABLE MANUAL CALL POINT

Description:

Optional Back box for surface mount

Re-settable (non-Breaking glass) with special key

Easy 1st and 2nd Fix Installation

Semi Flush or surface mount installation

Pleasing Style design

Protection Rating: IP55

Operating Voltage: 24V DC

Operating Current:

Stand by Current: 0

Alarm Current: 30mA





ADDRESSABLE SMOKE DETECTOR

Description:

This unit is aesthetically pleasing with a low profile, unobtrusive design that will complement modern building designs. It has 8 bit processor with A/D converter and built in algorithm maps for false alarm rejections.

Electronically addressed

Twin LED for 360° vision

Sensing chamber for exceptional dust proof ability



ADDRESSABLE SMOKE WITH SOUNDER

Description:

GST Brand

Bi-Color

85 dB Sounder



ADDRESSABLE SOUNDER

Description:

Providing two tones, Initiated by shorting External terminals, not affected by Loop power cut.

Polarity insensitive Signal Loop and Power Loop, with features of cable checking in case of power cut.

Operation voltage:

24VDC Loop (16V-28V), 24VDC Power Supply

Operation Current:

Loop: Standby Current 1mA, Alarm current 5mA

Power Supply: Standby Current 3mA, Alarm Current 50mA

Sounder output: 94dB @ 1 Metre

Polarized 2-core for loop and Polarized 2-core for loop







EN-54 Addressable Detectors

Addressable Smoke Detector

SDS9030A

Product Features:

- Compensates for temperature, humidity, and dust drift, and checks sensor faults.
- Non-polarity, two-wire bus for easy installation and maintenance.
- Includes Remote Indicator output and patented smoke chamber for reduced alarms.
- Simple device addressing with a portable coder.
- Single LED with 360° viewing.
- Suited for environments with rapid temperature changes, as well as dirty or smoky conditions.
- Comply with EN54-7, Certified by LPCB



Addressable Heat Detector

SDS9020A

Product Features:

- Ensure temperature compensation and inspect sensor faults.
- Convenient installation and maintenance with non-polarity, two-wire bus connection.
- Remote Indicator output included.
- Streamlined device addressing via portable coder.
- 360° viewing with a single LED.
- Well-suited for warehouses, loading bays, and underground car parks.
- Ideal for dirty or smoky environments.
- Unaffected by wind or atmospheric pressure.
- Comply with EN54-5, Certified by LPCB



Addressable Smoke & Heat Detector

SDS9036A

Product Features:

- Versatile multi-application sensor combining smoke and heat detection.
- Ensures compensation for temperature, humidity, and dust accumulation drift, with sensor fault inspection.
- Convenient installation and maintenance via non-polarity, two-wire bus connection.
- Includes Remote Indicator output and a patented smoke chamber for reduced fault alarms.
- Streamlined device addressing using a portable coder.
- Single LED with 360° viewing.
- Well-suited for various environments like hotels, hospitals, and schools.
- Remains unaffected by wind or atmospheric pressure.
- Comply with EN54-5 & EN54-7, Certified by LPCB



Addressable Detector Base

SDS12

To be base used with the Addressable Smoke Detector(SDS9030A), Addressable Heat Detector(SDS9020A) & Addressable Smoke & Heat Detector (SDS9036A) with LPCB Approvals.





FIRE ALARM PANELS

SDS1000/addressable Fire Alarm Control Mini Panel

Product Features:

- Single loop system with 120 points and 16 zone indicators.
- Convenient data/configuration import/export through the USB port.
- Network capability up to 20 panels through CAN connection.
- Easy cause and effect settings for fire alarms on both the control panel and PC.
- Comply with EN54-2/EN54-4, Certified by LPCB



SDS3002/Addressable 1 Loop Fire Alarm Control Panel

Product Features:

- Single loop system with 324 points and 32 zone indicators.
- 4.3' color screen LCD, resolution of 480x272 pixel
- Optional integral printer.
- Standalone programmable conventional sounder circuit output.
- Easy fire alarm cause and effect settings on the control panel and PC.
- Individual detector/module testing supported.
- Import/export data/configuration via USB port.
- Hierarchy management with three access levels.
- Network up to 255 panels (Ethernet connection) or 60 panels (CAN connection).
- Comply with EN54-2/EN54-4, Certified by LPCB & CE



SDS200A/Addressable 2 Loop Fire Alarm Control Panel

Product Features:

- 2 loops(510 points)
- 32 zone indicators
- Integral printer optional
- 4.3' color screen LCD, resolution of 480x272 pixel
- A standalone programmable conventional sounder circuit output
- Fire alarm cause and effect settings can be easily performed on the control panel and PC-set
- Support the detector/module test individually
- Support for importing and exporting data/configuration through USB port
- Hierarchy management with three access levels
- Network up to 510 panels (Ethernet connection) or 60 panels (CAN connection).
- Comply with EN54-2/EN54-4, Certified by APPLUS & CE



FIRE ALARM PANELS

SDS200A/Addressable 4 Loop Fire Alarm Control Panel

Product Features:

- 4 loops(1020 points)
- 32 zone indicators
- Inegral printer optional
- 4.3' color screen LCD, resolution of 480×272 pixel
- A standalone programmable conventional sounder circuit output
- Fire alarm cause and effect settings can be easily performed on the control panel and PC-set
- Support the detector/module test individually
- Support for importing and exporting data/configuration through USB port
- Hierarchy management with three access levels
- Network up to 1020 panels (Ethernet connection) or 60 panels (CAN connection).
- Comply with EN54-2/EN54-4, Certified by APPLUS & CE



- 2 loop control panel
- 1 expansion panel
- 2 loop cards



+



+



SDS200A/Addressable 6 Loop Fire Alarm Control Panel

Product Features:

- 6 loops(1530 points)
- 32 zone indicators
- Inegral printer optional
- 4.3' color screen LCD, resolution of 480×272 pixel
- A standalone programmable conventional sounder circuit output
- Fire alarm cause and effect settings can be easily performed on the control panel and PC-set
- Support the detector/module test individually
- Support for importing and exporting data/configuration through USB port
- Hierarchy management with three access levels
- Network up to 1530 panels (Ethernet connection) or 60 panels (CAN connection).
- Comply with EN54-2/EN54-4, Certified by APPLUS & CE



- 2 loop control panel
- 1 expansion panel
- 4 loop cards



+



+



Addressable Manual Call Point

Addressable Manual Call Point

SDS9060A

Product Features:

- LED for operational confirmation.
- Can be semi-flush or surface mounted.
- Optional waterproof Protection Cover FHH-SAP01.
- Resettable operating element with ergonomic reset key.
- Streamlined device addressing with a portable coder.
- Stable communication with high noise immunity.
- Non-polarity, two-wire bus connection for easy installation and maintenance.
- Passive output contacts designed to directly control external equipment via an intermediate relay.
- Comply with EN54-11, Certified by LPCB

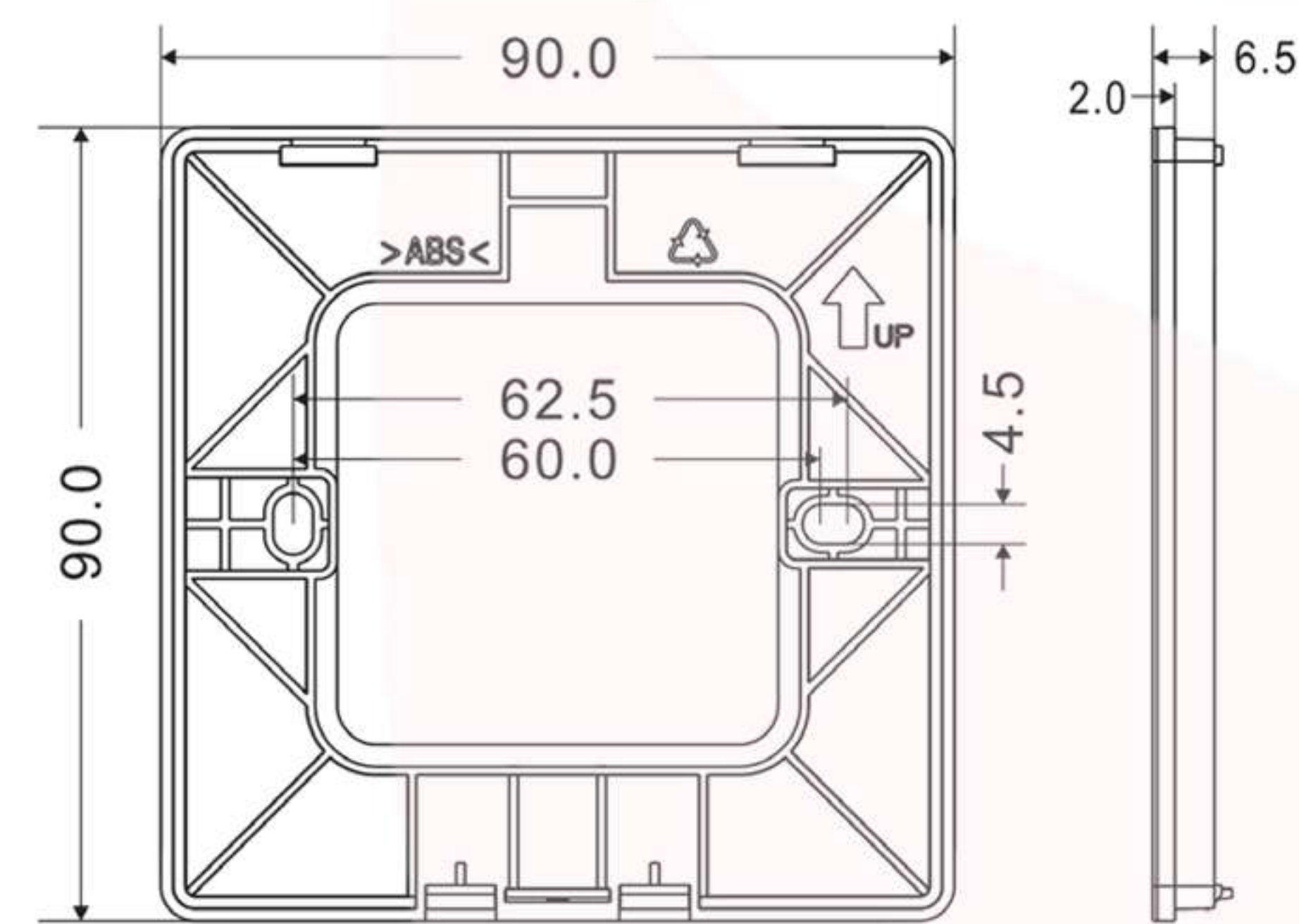


Addressable Manual Call Point Back Box

SDS-9060-BB

Product Features:

SDS9060A should comply with all local codes, NFPA70 National Electrical Code, BS5389 and EN54. Shown in Figure 2, the first one embedded box buried in the wall where the SDS9060A and then fixed to the base of the embedded box. Base dimensions of 90mm x 90mm x 6.5mm (Length x width x height), mounting hole diameter Ø5mm, fixing hole spacing is 60mm ~ 62.5mm, line pipe from the base lower penetration into the line shown in Figure.



Weatherproof Box

SDS-9060-WB

Weatherproof box for Manual Call Point

- Protection from the Elements
- Durability
- Prevention of Tampering and Vandalism
- Compliance with Regulations
- Reliability during Emergencies



Addressable Sounder Strobe

Addressable Loop-powered Sounder Strobe SDS9092A

Product Features:

- Loop-powered for efficiency.
- Mountable on both walls and ceilings.
- Synchronized flashing LED on sounder visual indicators.
- Streamlined device addressing through a portable coder.
- Ideal for general signaling and fire applications.
- Patented innovative design features incorporated into products.
- Non-polarity, two-wire bus connection for convenient installation and maintenance.
- Comply with EN54-3, Certified by LPCB



Addressable And Conventional Sounder Flasher Base SDS91K

Product Features:

Use two M4 screws to fix the SDS91K base via the two elliptic screw holes, then connect the bus cables with the terminal 1&3, and connect the DC24V power cables with the terminal 2&4 (2 connected with positive, and 4 with negative. 1.5mm² or above fire cable for the power input is recommended.), finally twist the main body onto the base.



Weatherproof Box SDS-9092WB

Weatherproof Box Deep Base for Sounder Strobe

- Protection from Environmental Elements
- Durability
- Secure Housing
- Mounting and Installation
- Compliance with Regulations
- Integration with Sounder Strobe Units



Addressable Module

Addressable Input/output Module

SDS9056A

Product Features:

- Mountable semi-flush or on surfaces.
- Streamlined device addressing via portable coder.
- Single LED with 360° viewing.
- Fast activation response.
- Equipped with a built-in microprocessor and sampling technology.
- Ensures high reliability and error detection.
- Low power consumption.
- Stable communication technique with high noise immunity.
- Comply with EN54-18, Certified by LPCB



Addressable Input/output Module Base

SDS56

Suitable for Only SDS9056A



Loop-Powered I/O Module

SDS9058A

Product Features:

- Non-polarity, two-wire bus connection ensures convenient installation and maintenance
- Suitable for semi-flush or surface mounting
- Simple and reliable device addressing via portable coder
- Single fire LED – 360°viewing
- Fast Activation Response
- Built-in microprocessor and sampling technology
- Provide high reliability and error detection
- Low Power Consumption
- Loop-powered
- Stable communication technique with high noise immunity
- Comply with EN54-18, Certified by LPCB



Loop Powered I/O Module Base

SDS58

Suitable for Only SDS9058A



Addressable Module & Isolator

Addressable Zone Module

SDS9052A

Product Features:

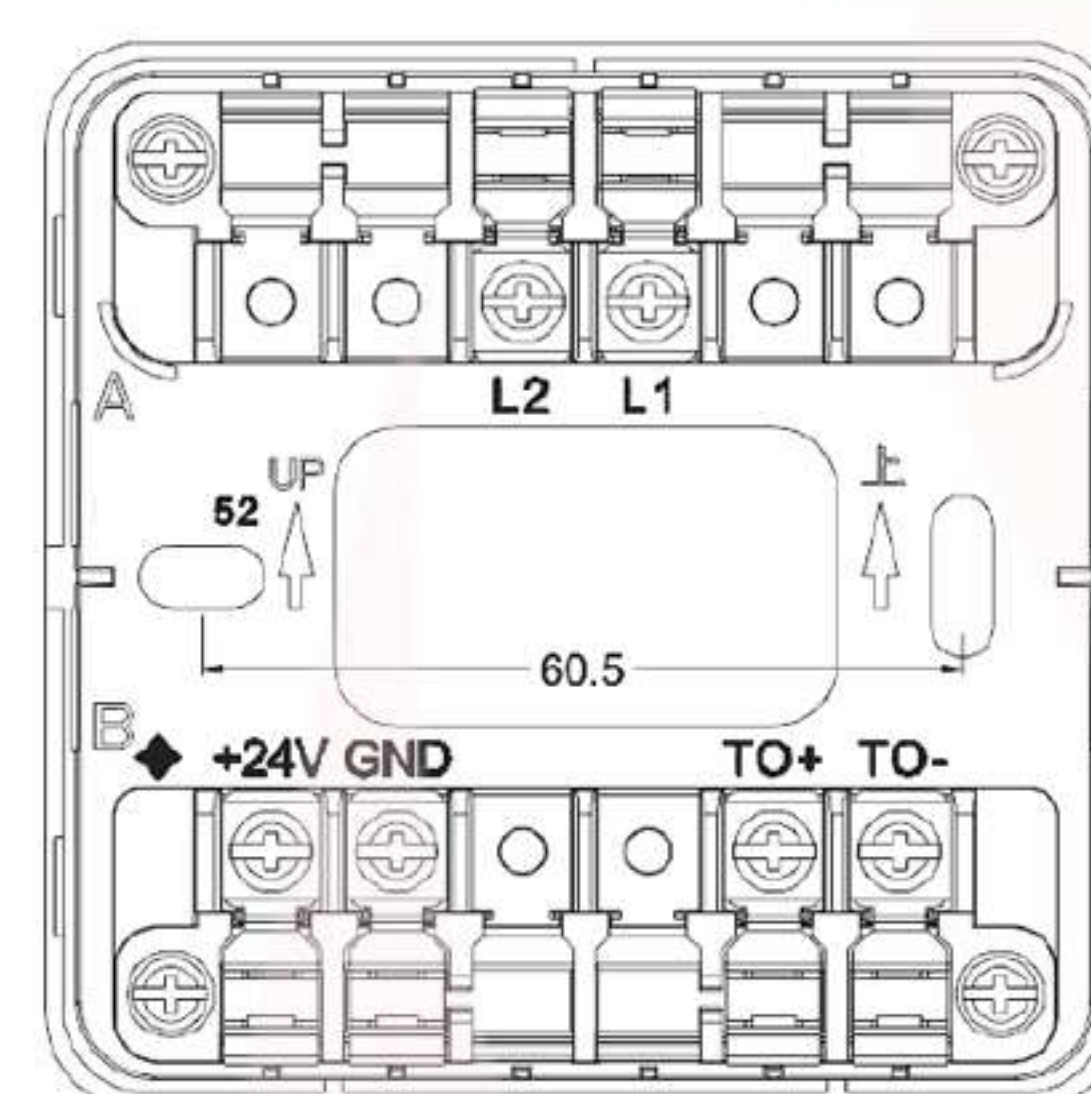
- Single LED with 360° viewing.
- Supports up to 30 conventional detectors.
- Utilizes analogue addressable communications.
- Suitable for semi-flush or surface mounting.
- Streamlined device addressing via portable coder.
- Stable communication technique with high noise immunity.
- Non-polarity, two-wire bus connection ensures convenient installation and maintenance.
- Comply with EN54-18, Certified by LPCB



Addressable Zone Module Base

SDS52

Suitable for Only SDS9052A



Short-circuit Isolator

SDS9057A

Product Features:

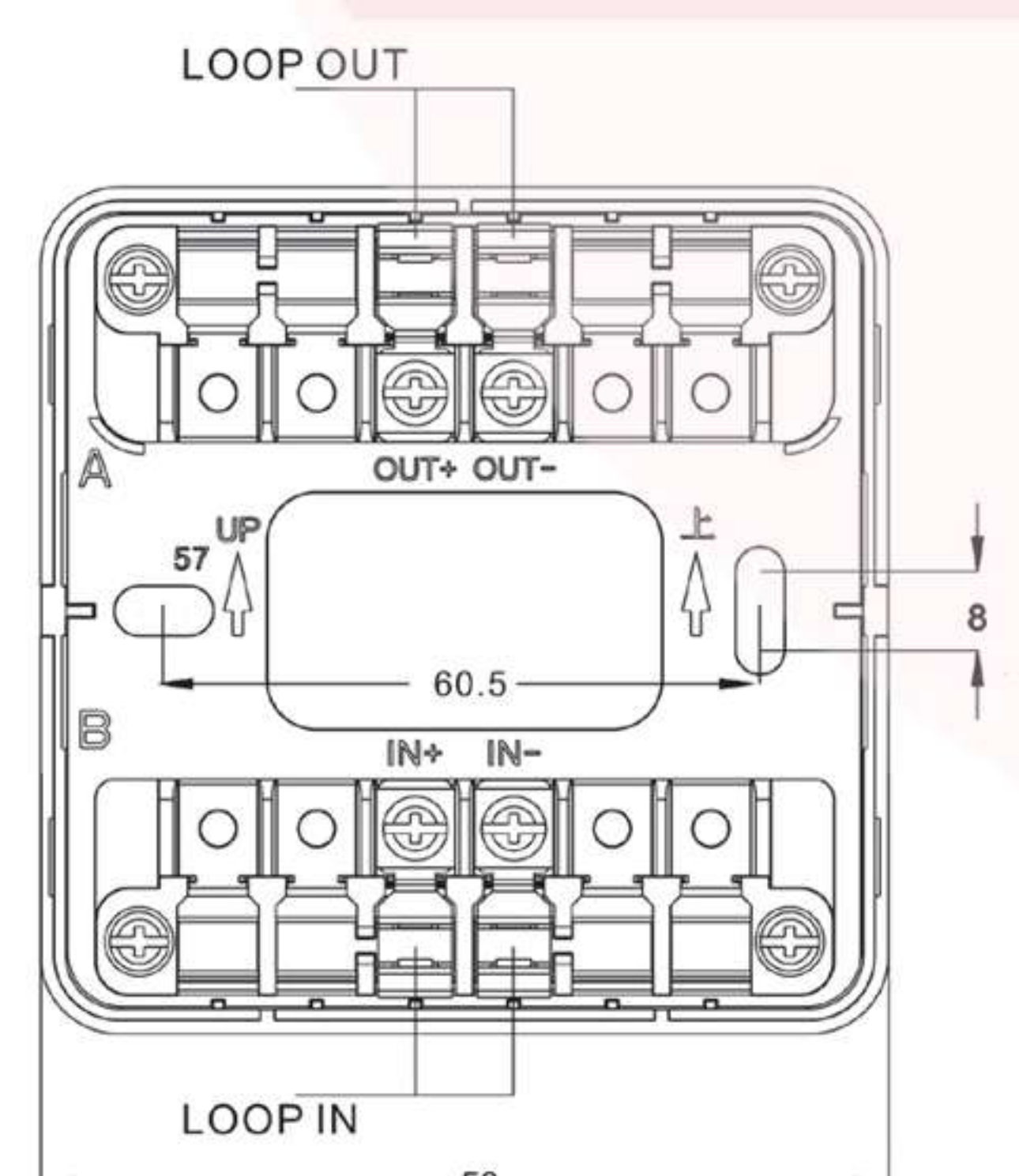
- Automatically restores after short circuit clearance, minimizing disruption.
- Mountable semi-flush or on surfaces.
- Single LED with 360° viewing.
- Fast activation response, loop-powered.
- Low power consumption.
- Stable communication technique with high noise immunity.
- Comply with EN54-17, Certified by LPCB



Short-circuit Isolator Base

SDS57

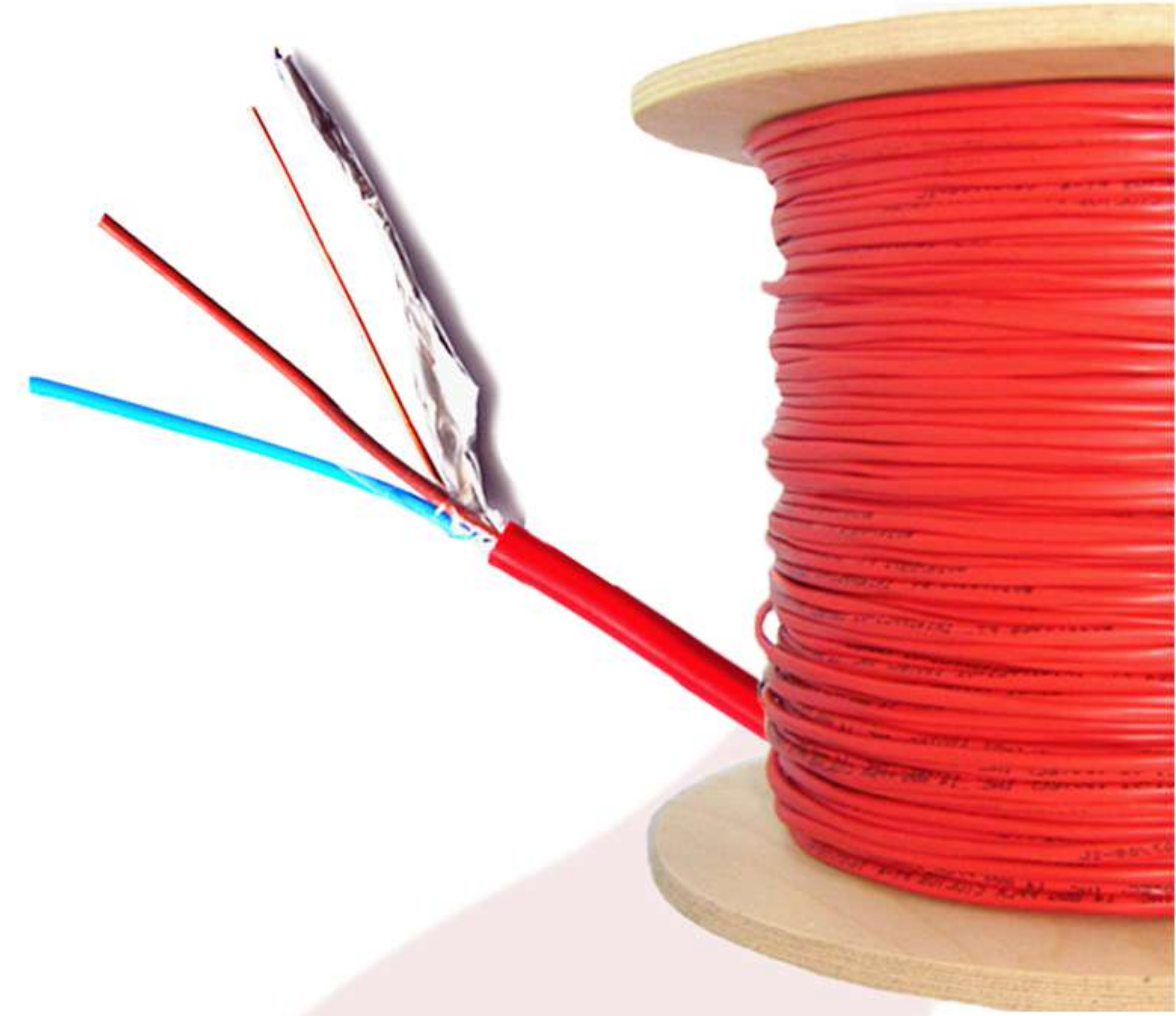
Suitable for Only SDS9057A



FIRE ALARM CABLE - UL LISTED

Description:

Soloarti Brand
1.5 mm x 2 core x 100 meter
1 mm x 2 core x 100 meter
Halogen Free
Withstand up to 250°C



EMERGENCY LIGHT - UL LISTED

Description:

Fluorescent single tube emergency light
Working Voltage: AC220V±10%
Battery: Nickel cadmium battery 3.6V 1.5Ah / 2.4V 4.0Ah
Emergency duration time: 3 hours
Working temperature: -10°C-55°C
Working Humidity: 10% - 90%
1x8W T5 Fluorescent tube
Product Size: 34. 6x10.6x7.9cm



EXIT LIGHT - UL LISTED

Description:

Is Designed to be slim and lightweight, low power consumption, Low EMI and specially equipped with a customized propriety Hybrid IC and super bright white LED and longer life-span. Easy and Fast installation.
Emergency Duration: 3 hrs
Working Temperature: -10°C to 50°C



NX Sprinklers



NX Sprinklers

UPRIGHT SPRINKLERS

Description:

The NX Brand Upright are automatic sprinklers of the frangible bulb type. Standard/quick response – standard orifice spray sprinkler intended for use in fire sprinkler systems designed in accordance with the standard installation rules recognized by the applicable listing or approval agency.

Approval: UL Listed



PENDENT SPRINKLERS

Description:

The NX Brand Pendent sprinklers are automatic sprinklers of the frangible bulb type. Standard/quick response – standard orifice spray sprinkler intended for use in fire sprinkler systems designed in accordance with the standard installation rules recognized by the applicable listing or approval agency.

Approval: UL Listed



SIDEWALL SPRINKLERS

Description:

The NX Brand Sidewall sprinklers are generally used in lieu of pendent and upright sprinklers. It is designed for installation along a wall or the side of a beam and just beneath a smooth ceiling. Installed with their centerline of waterway horizontal, these sprinklers produce a quarter-spherical water discharge pattern that is predominately directed downward and outward from the deflector; however a portion of the spray is also directed towards the back wall.

Approval: UL Listed



CO2 FIRE EXTINGUISHERS

Description:

Carbon Dioxide extinguisher are filled with non-flammable carbon dioxide gas under extreme pressure.

Carbon Dioxide is effective on Class B C fires (flammable liquid and electrical) and it's ideal for multi-risk fire.

The valve is equipped with safety release pressure to avoid any bursting of cylinders during high temperature.

Ready for instant use and simple to operate



DRY POWDER EXTINGUISHERS

Description:

Dry Powder fire extinguisher are filled with monoammonium phosphate, an extinguishing agent that spreads easily and melt over flames.

Dry chemical powder is effective on Class A B C fires and it's ideal for multi-risk fire.

It can be used to protect variety of different locations.

Ready for instant use and simple to operate.

Lighter to handle

Lighter to handle



DOUBLE DOOR CABINET

Description:

Double door cabinet used for manual and automatic hose reel, cabinets are made from mild steel with the sheet thickness of 1.2 mm. The outer edge of the hose reels is rolled over for safe handling and aesthetic appearance it can come with wired Glass, the lock mechanism is either lock type, key type or turn handle. The cabinets are designed to accommodate fire hose reel, landing valve and fire extinguishers. Thickness of cabinets can be changed upon client's request.

Available: Mild Steel and Stainless Steel



SINGLE DOOR CABINET

Description:

Single door cabinet used for manual and automatic hose reel, cabinets are made from mild steel with the sheet thickness of 1.2 mm. The outer edge of the hose reels is rolled over for safe handling and aesthetic appearance. The lock mechanism is either lock type, key type or turn handle. The cabinets are designed to accommodate fire hose reel manual Or Automatic.

Thickness of cabinets can be changed upon client's request.

Available: Mild Steel and Stainless Steel



CHECK VALVES



Description:

A check valve is probably in the discharge line of the pump. It allows flow in one direction and automatically prevents back flow (reverse flow) when fluid in the line reverses direction.

Valve Standard: Conforms to AWWA C508, Clear waterway

Working Pressure: 21 Bars/300PSI

Fusion bonded epoxy coated RAL3002

Flanged Ends: ANSI B16.1 Class 125/150/250, EN 1092-2 PN10/PN16

BS10 Table D/ Table E, Stainless Steel Stem



PROTECTOR DELUGE VALVES



Description:

The protector model P Deluge Valves is a quick opening hydraulically operated valve.

The valve may be actually manually (at the value location or remotely), hydraulically through the use of a wet pilot sprinkler, or electric type detector and/or electric control stations to actuate.



WET ALARM CHECK VALVES



Description:

Alarm Check Valve is a hydraulically operated external resetting differential latching style valve designed for use where quick-opening and total flooding of sprinkler system piping is desired.

It is used as an automatic water control valve in Deluge, Dry Pipe, or Precaution systems, as well as Foam-water sprinkler systems.



FIRE PUMPS

Description:

Fire pumps are used to boost the water pressure in sprinkler and standpipe systems and to deliver the required amount of water.

Easily access to all working parts

Rugged construction

Efficient Operation

Self-Venting Design

Dynamic balanced Impeller

Performance and Hydrostatic test

Space saving design

Available in 50 or 60 Hz

Available Pumps Type:

End Suction Pump

Horizontal Split Case



1.PROJECT: G+5P+HC+SERVICE+32 TYPICAL

AREA: AL MAMZAR, PLOT NO. 797, SHARJAH.

CONSULTANT: M/S. SHARJAH ENGINEERING CONSULTANT

SYSTEMS INSTALLED:

- FIRE FIGHTING SYSTEM
- FIRE PUMP – 2 PUMPS
- 1850 GPM @ 18 BAR (VERTICAL TURBINE)
- 1000 GPM @ 13 BAR (HORIZONTAL)
- FIRE SPRINKLER SYSTEM
- FIRE ALARM SYSTEM
- VOICE EVACUATION SYSTEM
- CENTRAL BATTERY SYSTEM
- FOAM SYSTEM
- PREACTION SYSTEM
- FM 200 SYSTEMS.



2. PROJECT: UMM AL QUORA BUILDING (G+5P+HC+21)

AREA: AL MAMZAR, PLOT NO. 141, SHARJAH.

CONSULTANT: M/S. AL ALAM ENGINEERING CONSULTANT

SYSTEMS INSTALLED:

- FIRE FIGHTING SYSTEM
- FIRE PUMP– CAPACITY 1000 GPM @ 19 BAR
- FIRE SPRINKLER SYSTEM
- FIRE ALARM SYSTEM
- VOICE EVACUATION SYSTEM
- CENTRAL BATTERY SYSTEM
- FM 200 SYSTEMS.



3. PROJECT: RESIDENTIAL BUILDING (G+5P+15)

AREA: AL KHAN, PLOT NO. 585, SHARJAH.

CONSULTANT: M/S. SHARJAH ENGINEERING CONSULTANT

SYSTEMS INSTALLED:

- FIRE FIGHTING SYSTEM
- FIRE PUMP- CAPACITY 750 GPM @ 13.5 BAR
- FIRE SPRINKLER SYSTEM
- FIRE ALARM SYSTEM
- VOICE EVACUATION SYSTEM
- CENTRAL BATTERY SYSTEM
- FOAM SYSTEM
- PREACTION SYSTEM
- FM 200 SYSTEMS.



4. PROJECT: AL MURJON TOWER (G+4P+15)

AREA: AL MAJAZ 2, PLOT NO. 817, SHARJAH.

CONSULTANT: M/S. AL NAHDA ENGINEERING CONSULTANT

SYSTEMS INSTALLED:

- FIRE FIGHTING SYSTEM
- FIRE PUMP- CAPACITY 750 GPM @ 16 BAR
- FIRE SPRINKLER SYSTEM
- FIRE ALARM SYSTEM
- VOICE EVACUATION SYSTEM
- EMERGENCY/EXIT LIGHT SYSTEM.



5. BUILDING: SARH AL EMARAT TOWER

AREA: Buhairah Corniche Area, Sharjah.

SYSTEM MAINTAINED:

- FIRE FIGHTING SYSTEM
- FIRE PUMP
- FIRE SPRINKLER SYSTEM
- FIRE ALARM SYSTEM
- CENTRAL MONITORING SYSTEM



6. BUILDING: SAHAB AL EMARAT TOWER

AREA: Mamzar Area, Sharjah.

Ground Floor+(5)Parking +(44) Residence floor

SYSTEM MAINTAINED:

- FIRE FIGHTING SYSTEM
- FIRE PUMP
- FIRE SPRINKLER SYSTEM
- FIRE ALARM SYSTEM
- CENTRAL BATTERY SYSTEM



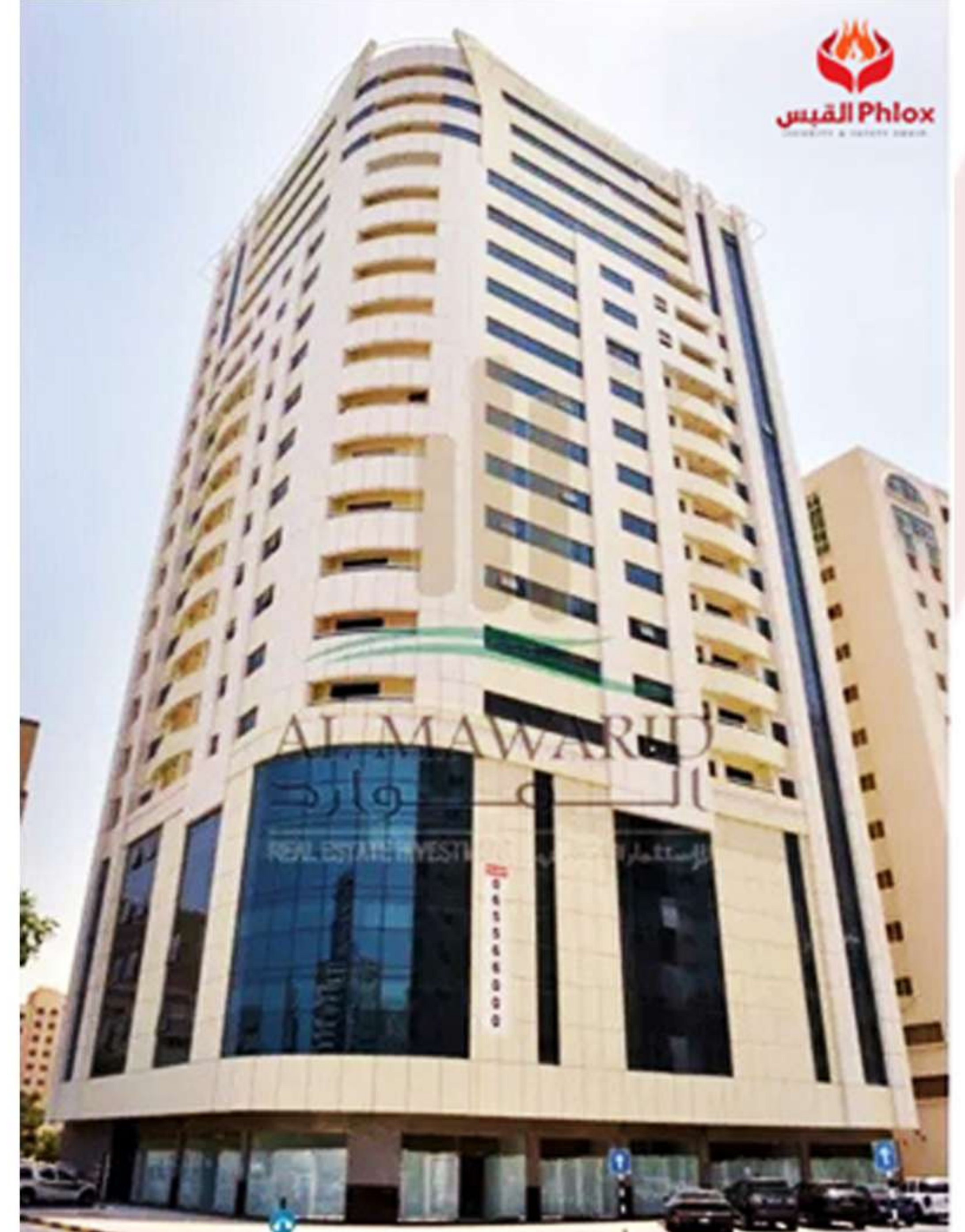
7. PROJECT: AL ZAHIA BUILDING (G+3P+15)

AREA: ABU SHAGARA, PLOT NO. 350, SHARJAH.

CONSULTANT: M/S. SHARJAH ENGINEERING CONSULTANT

SYSTEMS INSTALLED:

- FIRE FIGHTING SYSTEM
- FIRE PUMP- CAPACITY 750 GPM @ 14 BAR
- FIRE SPRINKLER SYSTEM
- FIRE ALARM SYSTEM
- VOICE EVACUATION SYSTEM
- CENTRAL MONITORING SYSTEM
- FM 200 SYSTEMS.



8. PROJECT: RESIDENTIAL BUILDING (G+3P+15)

AREA: ABU SHAGARA, PLOT NO. 894, SHARJAH.

CONSULTANT: M/S. AL NAHDA ENGINEERING CONSULTANT

SYSTEMS INSTALLED:

- FIRE FIGHTING SYSTEM
- FIRE PUMP- CAPACITY 750 GPM @ 12 BAR
- FIRE SPRINKLER SYSTEM
- FIRE ALARM SYSTEM
- VOICE EVACUATION SYSTEM
- CENTRAL MONITORING SYSTEM
- FM 200 SYSTEMS.

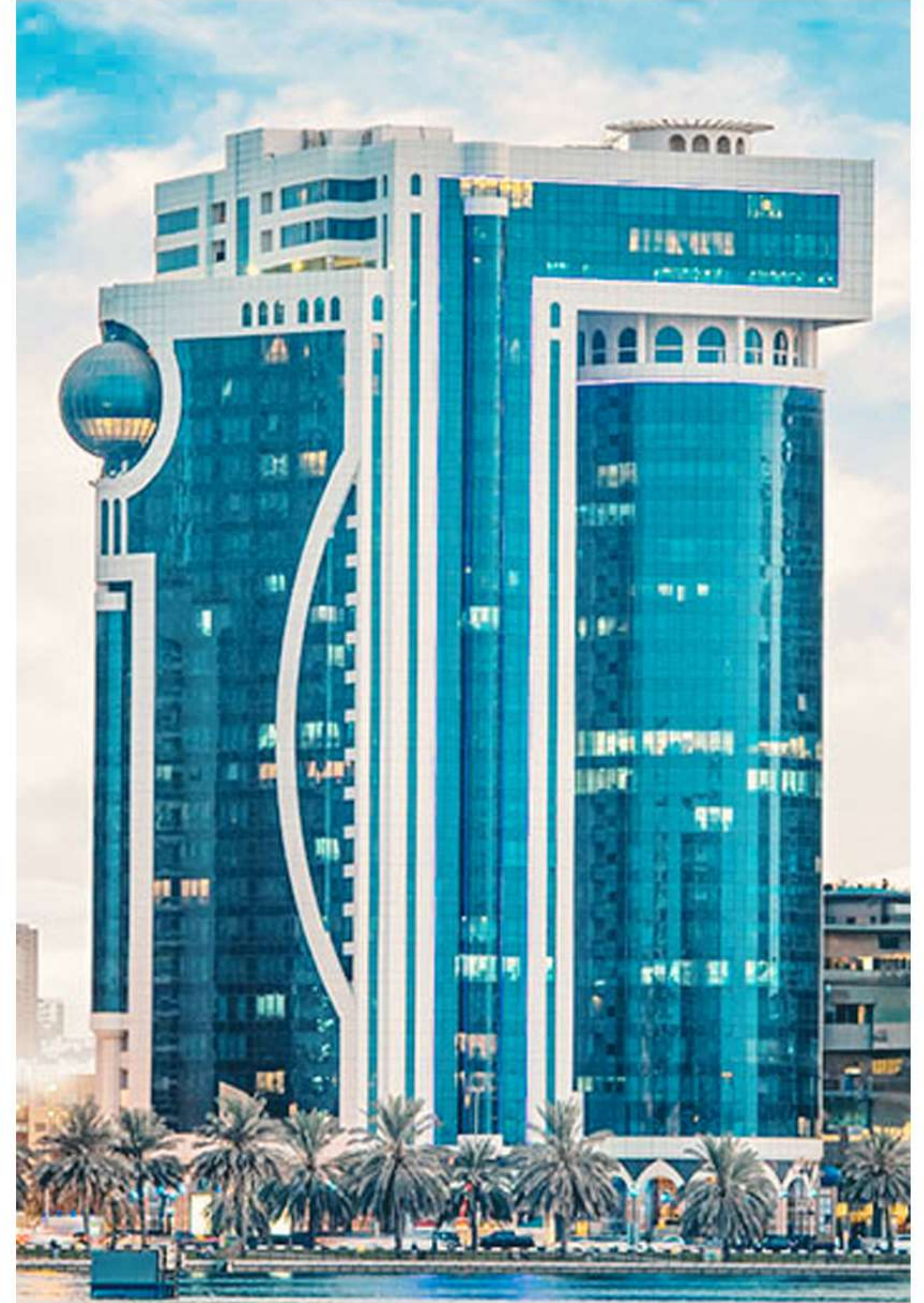


9. DURRAH TOWER

AREA: Buhairah Corniche Area, Sharjah.
B+G+(1) P+(25) Residence floor+(26)Office floor

SYSTEM MAINTAINED:

- FIRE ALARM SYSTEM
- FIRE FIGHTING SYSTEM
- FIRE SPRINKLER SYSTEM
- FIRE PUMPS (2-PUMPS) :
CAPACITY: 500GPM @ 25 BAR
750 GPM @ 25 BAR
- EMERGENCY & EXIT LIGHT SYSTEM



10. EMARAT SAILS TOWER

AREA: Mamzar Area, Sharjah.
G+M+(4) P+HC+30

SYSTEM MAINTAINED:

- FIRE ALARM SYSTEM
- FIRE FIGHTING SYSTEM
- FIRE SPRINKLER SYSTEM
- FIRE PUMP – CAPACITY 1250 GPM @ 17 BAR
- EMERGENCY & EXIT LIGHT SYSTEM



11.PROJECT: MUZON 2 (G+M+5+PH)

AREA: INDUSTRIAL AREA 6, PLOT NO. 1424 D, SHARJAH.

CONSULTANT: M/S. TRILLIUM ENGINEERING CONSULTANT

SYSTEMS INSTALLED:

- FIRE FIGHTING SYSTEM
- FIRE PUMP – CAPACITY 300 GPM @ 9 BAR
- FIRE SPRINKLER SYSTEM
- FIRE ALARM SYSTEM
- EMERGENCY/EXIT LIGHT SYSTEM.



12.PROJECT: MUZON 3 (G+M+5+PH)

AREA: INDUSTRIAL AREA 6, PLOT NO. 1424 E, SHARJAH.

CONSULTANT: M/S. TRILLIUM ENGINEERING CONSULTANT

SYSTEMS INSTALLED:

- FIRE FIGHTING SYSTEM
- FIRE PUMP– CAPACITY 500 GPM @ 9 BAR
- FIRE SPRINKLER SYSTEM
- FIRE ALARM SYSTEM
- EMERGENCY/EXIT LIGHT SYSTEM.



13. THURAYA BUILDING

AREA: AL MAJAZ Area, Sharjah.

G +(5)Parking +(15) Residence floor

SYSTEM MAINTAINED:

- FIRE FIGHTING SYSTEM
- FIRE PUMP
- FIRE SPRINKLER SYSTEM
- FIRE ALARM SYSTEM



14. DIWAN BUILDING

AREA: Al Qasmyiah Area, Sharjah.

Ground Floor+(2)Parking +(15) Residence floor

SYSTEM MAINTAINED:

- FIRE FIGHTING SYSTEM
- FIRE PUMP
- FIRE SPRINKLER SYSTEM
- FIRE ALARM SYSTEM
- EMERGENCY AND EXIT LIGHTING SYSTEM



15. PROJECT: RESIDENTIAL BUILDING (G+2)

AREA: MAISALOON, PLOT NO. 593, 594, SHARJAH.

CONSULTANT: AL AMIN ENGINEERING & CONSULTING LLC

SYSTEMS INSTALLED:

- FIRE FIGHTING SYSTEM
- FIRE PUMP – CAPACITY 300 GPM @ 9 BAR
- FIRE SPRINKLER SYSTEM
- FIRE ALARM SYSTEM
- EMERGENCY/EXIT LIGHT SYSTEM.



16. PROJECT: AL ZAHRA MALL (G + M) - (LULU)

AREA: AL MAISALOON, PLOT NO. 603, SHARJAH.

CONSULTANT: TRILLIUM ENGINEERING CONSULTANTS

SYSTEMS INSTALLED:

- FIRE FIGHTING SYSTEM
- FIRE PUMP – CAPACITY 750 GPM @ 8 BAR
- FIRE SPRINKLER
- FIRE ALARM SYSTEM.
- EMERGENCY/EXIT LIGHT SYSTEM
- FIRE TELEPHONE SYSTEM



17. PROJECT: FIVE (5) STORAGE OIL TANKS

AREA: AL BUSTAN, PLOT NO. 11, AJMAN.

CONSULTANT: LINES ENGINEERING CONSULTANT

SYSTEMS INSTALLED:

- FIRE FIGHTING SYSTEM
- FIRE PUMP CAPACITY – 1500 GPM @ 10 BAR
- DELUGE SYSTEM
- FIRE WATER GUN SYSTEM



18. PROJECT: DIESEL STORAGE TANK

AREA: AL SAJAA, AL HANO AREA, PLOT NO.D/164/18, SHARJAH.

CONSULTANT: M/S AL AUSAF CONSULTANTS

SYSTEMS INSTALLED:

- DELUGE SYSTEM
- FIRE HYDRANT SYSTEM
- FOAM SYSTEM
- FIRE PUMP CAPACITY – 1250 GPM @ 10 BAR



19. PROJECT: 20 SHEDS - GROUP 1

AREA: INDUSTRIAL AREA 6, PLOT NO. 1424-A, SHARJAH.

CONSULTANT: M/S. SHARJAH MUNICIPALITY UAE

SYSTEMS INSTALLED:

- FIRE FIGHTING SYSTEM
- FIRE PUMP- CAPACITY 500 GPM @ 9 BAR
- FIRE SPRINKLER SYSTEM
- FIRE ALARM SYSTEM
- EMERGENCY/EXIT LIGHT SYSTEM.
- FM200 SYSTEM



20. PROJECT: AL HANO 18 SHEDS

AREA: IND. AREA 6, SHARJAH.

CONSULTANT: SHARJAH ENGINEERING CONSULTANT

SYSTEMS INSTALLED:

- FIRE FIGHTING SYSTEM
- FIRE PUMP - CAPACITY 300 GPM @ 9 BAR
- FIRE SPRINKLER SYSTEM
- FIRE ALARM SYSTEM
- EMERGENCY/EXIT LIGHT SYSTEM.



21. PROJECT: MASJID

AREA: AL JURAINA 1, PLOT NO.812, SHARJAH.

CONSULTANT: M/S. SHARJAH ENGINEERING CONSULTANT

SYSTEMS INSTALLED:

- FIRE FIGHTING SYSTEM
- FIRE ALARM SYSTEM
- EMERGENCY/EXIT LIGHT SYSTEM.



22. PROJECT: RESIDENTIAL BUILDING (B+G+7)

AREA: MUWEILLAH, PLOT NO. 434, SHARJAH.

CONSULTANT: M/S. FUTURE ENGINEERING CONSULTANT

SYSTEMS INSTALLED:

- FIRE FIGHTING SYSTEM
- FIRE PUMP- CAPACITY 750 GPM @ 11 BAR (VERTICAL TURBINE)
- FIRE SPRINKLER SYSTEM
- FIRE ALARM SYSTEM
- VOICE EVACUATION SYSTEM
- CENTRAL MONITORING SYSTEM
- FM 200 SYSTEMS.



23. PROJECT: PARKING BUILDING (G+2+R)

AREA: IND.AREA-6, PLOT NO. 1424, SHARJAH.

CONSULTANT: M/S. SHARJAH ENGINEERING CONSULTANT

SYSTEMS INSTALLED:

- FIRE FIGHTING SYSTEM
- FIRE PUMP – CAPACITY 1000 GPM @ 10BAR (VERTICAL TURBINE)
- FIRE SPRINKLER SYSTEM
- FIRE ALARM SYSTEM
- CENTRAL MONITORING SYSTEM



24. AL AMEERA RESIDENTIAL BUILDING

AREA: Abu Shagara , Plot No.156, Sharjah.

Ground Floor+(4)Parking +(15) Residence floor

- FIRE FIGHTING SYSTEM
- FIRE PUMP
- FIRE SPRINKLER SYSTEM
- FIRE ALARM SYSTEM



25. PROJECT: RESIDENTIAL BUILDING (G+3)

AREA: MUWEILLAH, PLOT NO. 2329, SHARJAH.

CONSULTANT: M/S. AL HAMRA CONSULTANT

SYSTEMS INSTALLED:

- FIRE FIGHTING SYSTEM
- FIRE PUMP– CAPACITY 50 GPM @ 6 BAR
- FIRE ALARM SYSTEM
- EMERGENCY/EXIT LIGHT SYSTEM.



26. PROJECT: RESIDENTIAL BUILDING (B+G+2)

AREA: AL MUSALLA, PLOT NO. 7, SHARJAH.

CONSULTANT: M/S. AL TASMEEM AL HADETH
ENGINEERING CONSULTANT

SYSTEMS INSTALLED:

- FIRE FIGHTING SYSTEM
- FIRE PUMP– CAPACITY 500 GPM @
9 BAR – VERTICAL TURBINE
- FIRE SPRINKLER SYSTEM
- FIRE ALARM SYSTEM
- CENTRAL MONITORING SYSTEM
- FM 200 SYSTEMS.



27. PROJECT: ARMADA TOWERS – P1. P2 AND P3

AREA: JUMEIRAH LAKES TOWERS, DUBAI.

CONSULTANT: ENG. ADNAN SAFFARINI

SYSTEMS INSTALLED:

- FM200 SYSTEM (3 - ROOMS)
- CEILING MOUNTED DRY POWDER AUTOMATIC (15 – ROOMS)



28. PROJECT: G+6 BUILDING

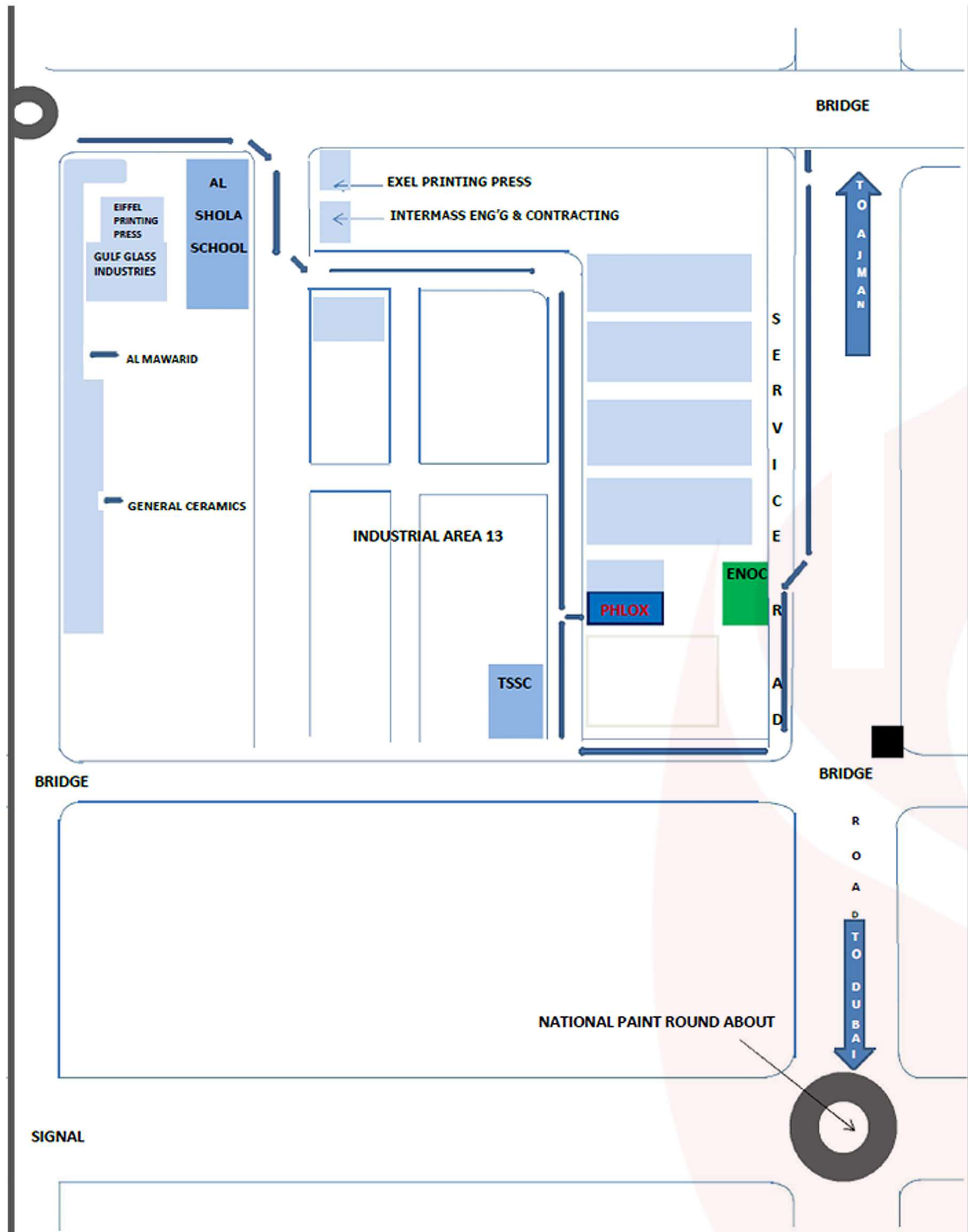
AREA: AL GHUWAIR, ROLLA, PLOT NO. 393, SHARJAH.

CONSULTANT: AL ZAJEL CONSULTING ENGINEERS

SYSTEMS INSTALLED:

- FIRE FIGHTING SYSTEM
- FIRE PUMP – CAPACITY 100 GPM @ 7 BAR
- FIRE SPRINKLER SYSTEM
- FIRE ALARM SYSTEM





PHLOX Security & Safety Equip. (L.L.C.)



P.O. Box: 65433



info@phloxuae.com



Address: Shed No. 4, Industrial Area 13, Sharjah, UAE.



Tel.: 06 5770559

Mob.: 054 5668027



القبس Phlox

SECURITY & SAFETY EQUIP.

Tel: +971 6 5770559 | www.phloxuae.com | info@phloxuae.com
Industrial Area # 13, behind Shoula School | SHARJAH - UAE